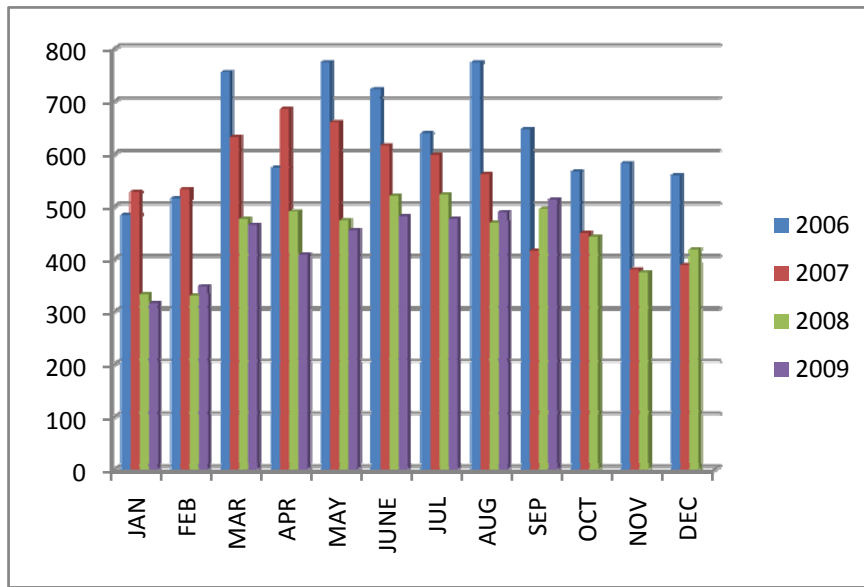


SOLD TOTALS FOR GREATER EL PASO ASSOCIATION OF REALTORS®



	JAN	FEB	MAR	APR	MAY	JUNE	JUL	AUG	SEP	OCT	NOV	DEC	YTD
2006	484	515	755	573	774	723	639	774	647	566	582	559	7,591
2007	527	533	632	685	660	616	598	561	416	449	380	388	6,445
2008	333	330	476	490	473	520	523	469	495	442	375	418	5,344
2009	316	348	465	408	455	481	476	489	513				3,951

The numbers for September pulled November 23ed

Active Residential - 3,481

September Home Sold Report - Compiled on November 23, 2009

	Sep-09	Change from 08/09	Sep-08	Change from 09/08 - 09/09	YTD 2009	YTD 2008	09-08 YTD
Residential							
New Listings	1,060	16.48%	924	14.72%	8,923	9,904	-9.91%
Sold Listings	514	3.22%	495	3.64%	4,027	4,099	-1.76%
Sold Volume \$	\$78,415,162	5.81%	\$78,685,097	-0.34%	\$612,088,331	\$657,576,945	-6.92%
Ave. Sale \$	\$152,856	2.51%	\$158,960	-3.84%	\$151,996	\$160,424	-5.25%
High Sale \$	\$1,000,000	39.86%	\$699,000	43.06%	\$1,250,000	\$1,250,000	0.00%
DOM	109	-11.19%	99	10.59%	110	104	5.04%

BREAKDOWN OF LISTINGS

New Homes	182	Ave List \$	153,178	Ave/Med Sell \$	152,156/132,000	List/Sell Ratio 99%	DOM 129
Resale Homes	320	Ave List \$	161,576	Ave/Med Sell \$	154,538/129,250	List/Sell Ratio 96%	DOM 98
Attached Property	12			Ave Sell \$	114,033		DOM 67
Man. & Lot	10						
Resale Pending	67	Avg. List \$	\$133,267	(TOTAL IN SYSTEM 121)			DOM 69