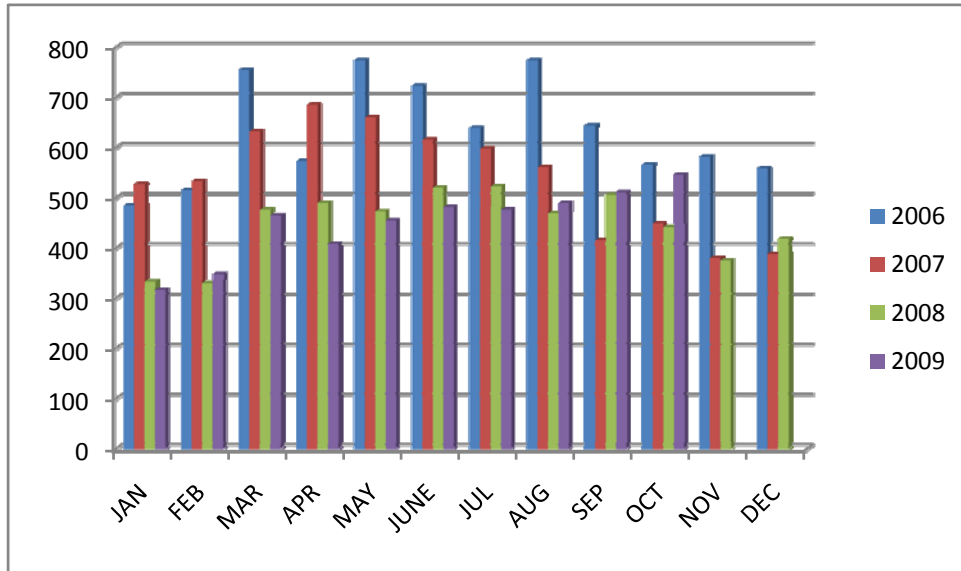


SOLD TOTALS FOR GREATER EL PASO ASSOCIATION OF REALTORS®



	JAN	FEB	MAR	APR	MAY	JUNE	JUL	AUG	SEP	OCT	NOV	DEC	YTD
2006	484	515	755	573	774	723	639	774	644	566	582	559	7,588
2007	527	533	632	685	660	616	598	561	415	449	380	388	6,444
2008	333	330	476	490	473	520	523	469	506	442	375	418	5,355
2009	316	348	465	408	455	481	476	489	511	546			4,495

The numbers for October pulled December 2nd

active 3,453

October Home Sold Report - Compiled on **DECEMBER 2, 2009**

	Oct-09	Change from 09/09	Oct-08	Change from 10/08 -10/09	YTD 2009	YTD 2008	09-08 YTD
Residential							
New Listings	880	-19.27%	962	-8.52%	9,802	10,866	-9.79%
Sold Listings	546	-2.85%	431	26.68%	4,576	4,530	1.02%
Sold Volume \$	\$81,299,21		\$67,603,75		\$693,797,042	\$725,180,697	-4.33%
Ave. Sale \$	\$148,900	-3.36%	\$156,853	-5.07%	\$151,671	\$160,084	-5.26%
High Sale \$	\$715,000	-28.50%	\$827,000	-13.54%	\$1,250,000	\$1,250,000	0.00%
DOM	106	-2.59%	97	9.00%	109	104	5.30%

BREAKDOWN OF LISTINGS							
New Homes	186	Ave List \$	152,155	Ave/Med Sell\$	151,939/132,475	List/Sell Ratio	DOM
						100%	110
Resale Homes Attached Property	345	Ave List \$	156,244	Ave/Med Sell\$	149,022/127,800	List/Sell Ratio	DOM
						95%	103
Man. & Lot	15			Ave Sell \$	108,390		DOM
Resale Pending	9						119
		Avg. List \$	\$137,248		(TOTAL IN SYSTEM 245)		DOM 88