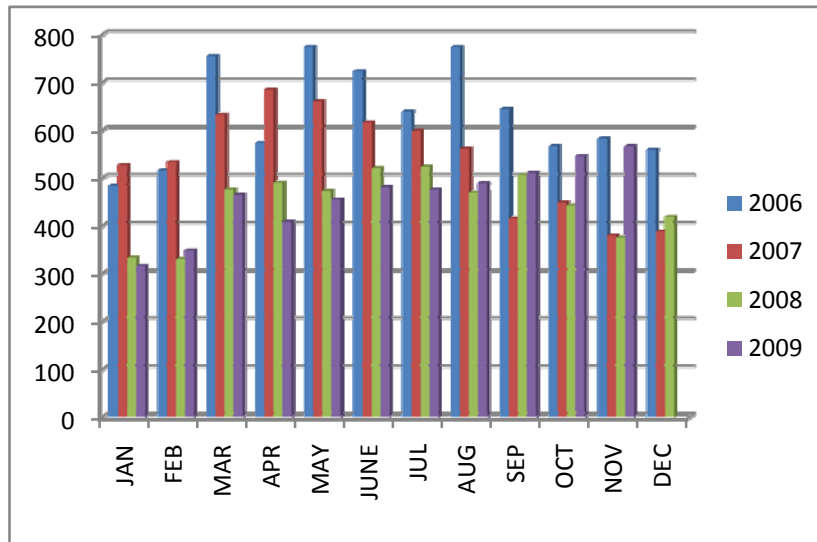


SOLD TOTALS FOR GREATER EL PASO ASSOCIATION OF REALTORS®



	JAN	FEB	MAR	APR	MAY	JUNE	JUL	AUG	SEP	OCT	NOV	DEC	YTD
2006	484	515	755	573	774	723	639	774	644	566	582	559	7,588
2007	527	533	632	685	660	616	598	561	415	449	380	388	6,444
2008	333	330	476	490	473	520	523	469	506	442	375	418	5,355
2009	316	348	465	408	455	481	476	489	511	546	566		5,061

The numbers for November pulled January 06

ACTIVE- 3,250

November Home Sold Report - Compiled on January 06,2010

Residential	Nov-09	Change from 10/09	Nov-08	Change from 11/08 -11/09	YTD 2009	YTD 2008	09-08 YTD
New Listings	666	-24.92%	603	10.45%	10,501	11,479	-8.52%
Sold Listings	566	2.34%	374	51.34%	5,166	4,904	5.34%
Sold Volume \$	\$82,965,91		\$57,653,08		\$780,547,586	\$782,833,777	-0.92%
Ave. Sale \$	\$146,583	-2.13%	\$154,153	-4.91%	\$151,093	\$159,632	-5.35%
High Sale \$	\$550,000	-23.08%	\$715,000	-23.08%	\$1,250,000	\$1,250,000	0.00%
DOM	88	-17.53%	109	-19.10%	107	104	2.85%

BREAKDOWN OF LISTINGS							
New Homes	227	Ave List \$	153,315	Ave/Med Sell\$	152,251/138,900	List/Sell Ratio	99%
Resale Homes	324	Ave List \$	150,576	Ave/Med Sell\$	145,191/125,000	List/Sell Ratio	96%
Attached Property	15			Ave Sell \$	90,880		
Man. & Lot	2						
Resale Pending	70	Avg. List \$	\$123,693	(TOTAL IN SYSTEM 150)			DOM 82

January 06, 2010 - Information herein deemed reliable but not guaranteed