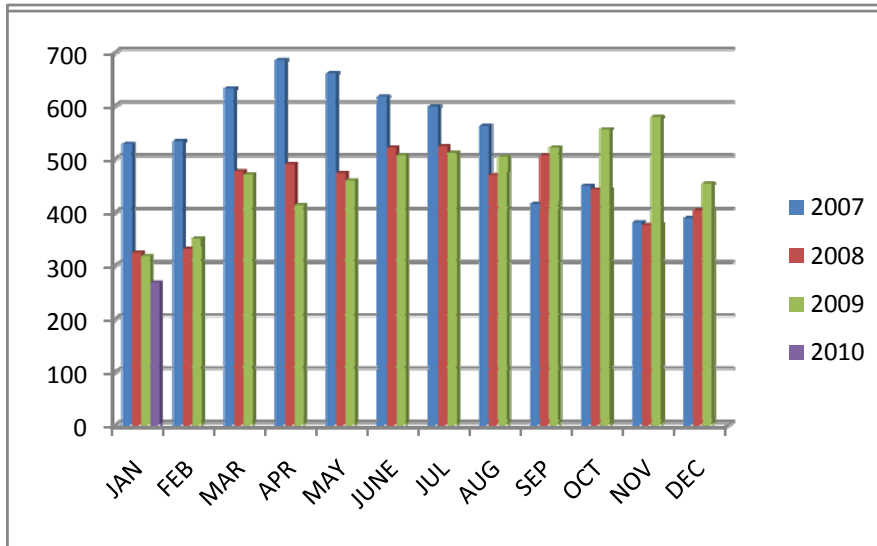


SOLD TOTALS FOR GREATER EL PASO ASSOCIATION OF REALTORS®



	JAN	FEB	MAR	APR	MAY	JUNE	JUL	AUG	SEP	OCT	NOV	DEC	Tot.
2007	527	533	632	685	660	616	598	561	415	449	380	388	6444
2008	324	330	476	490	473	520	523	469	506	442	375	403	5331
2009	317	350	470	413	459	506	511	503	520	555	578	453	5635
2010	267												267

January 2010 Home Sold Report - Compiled on March 2, 2010							
Residential	Jan-10	Change from 12/09	Jan-09	Change from 01/09 - 01/010	YTD 2010	YTD 2009	10-09 YTD
New Listings	920	40.24%	1,017	-9.54%	901	1,017	-9.54%
Sold Listings	267	-41.96%	317	-15.77%	267	317	-15.77%
Sold Volume \$	\$41,263,458	-41.48%	\$50,171,253	-17.75%	\$41,263,458	\$50,171,253	-17.75%
Ave. Sale \$	\$154,545	0.82%	\$158,269	-2.35%	\$154,545	\$158,269	-2.35%
High Sale \$	\$720,000	-24.21%	\$950,000	-24.21%	\$720,000	\$950,000	-24.21%
DOM	103	-14.80%	103	-0.17%	103	103	-0.17%

BREAKDOWN OF LISTINGS							
New Homes	80	Ave List \$	166,857	Ave/Med Sell\$	165,966/156,050	List/Sell Ratio 99%	DOM 159
Resale Homes Attached Property	179	Ave List \$	199,664	Ave/Med Sell\$	152,845/159,664	List/Sell Ratio 96%	DOM 77
Man. & Lot	8			Ave Sell \$	69,286		DOM 248
Resale Pending	118	Avg. List \$	\$137,434				91

Active 3,344

March 2, 2010 - Information herein deemed reliable but not guaranteed