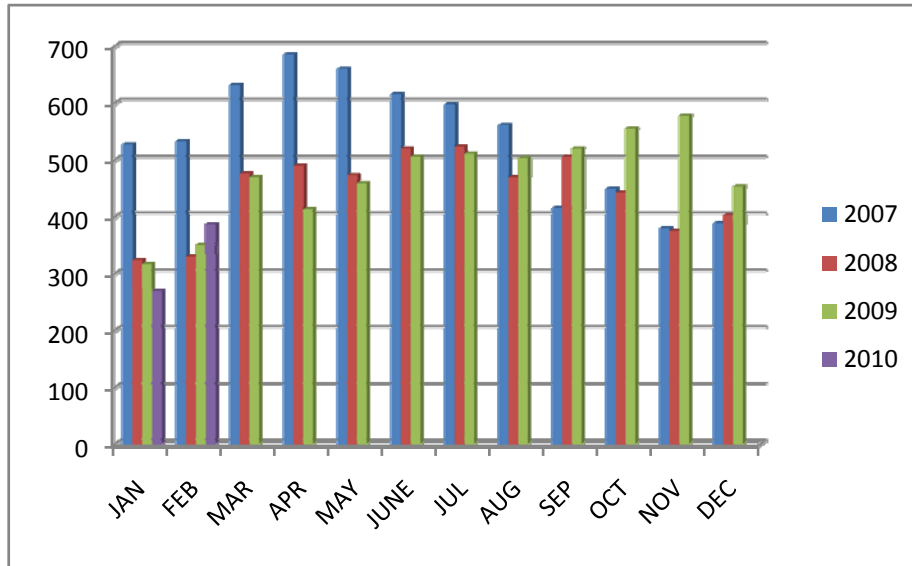


SOLD TOTALS FOR GREATER EL PASO ASSOCIATION OF REALTORS®



	JAN	FEB	MAR	APR	MAY	JUNE	JUL	AUG	SEP	OCT	NOV	DEC	Tot.
2007	527	533	632	685	660	616	598	561	415	449	380	388	6444
2008	324	330	476	490	473	520	523	469	506	442	375	403	5331
2009	317	350	470	413	459	506	511	503	520	555	578	453	5635
2010	270	387											657

February Home Sold Report - Compiled on April 14, 2010							
Residential	Feb-10	Change from 01/10	Feb-09	Change from 02/09 - 02/010	YTD 2010	YTD 2009	10-09 YTD
New Listings	919	-3.97%	951	-3.36%	1,959	1,966	-0.36%
Sold Listings	387	45.49%	350	10.57%	659	667	-1.20%
Sold Volume \$	\$55,382,32		\$52,632,65			\$102,803,90	
Ave. Sale \$	\$143,107	-7.08%	\$150,379	-4.84%	\$147,360	\$154,129	-4.30%
High Sale \$	\$1,100,000	52.78%	\$680,000	61.76%	\$1,100,000	\$950,000	15.79%
DOM	105	2.98%	129	-18.34%	104	116	10.99%

BREAKDOWN OF LISTINGS						
New Homes	148	Ave List \$	155,801	Ave/Med Sell \$	154,386/139,379	List/Sell Ratio 99% DOM 119
Resale Homes	224	Ave List \$	146,867	Ave/Med Sell \$	139,066/112,700	List/Sell Ratio 95% DOM 94
Attached Property	15			Ave Sell \$	92,160	DOM 133
Man. & Lot	6					
Resale Pending	94	Avg. List \$	\$134,595	(TOTAL IN SYSTEM 2010 - 59)		DOM 74

ACTIVE = 3,347