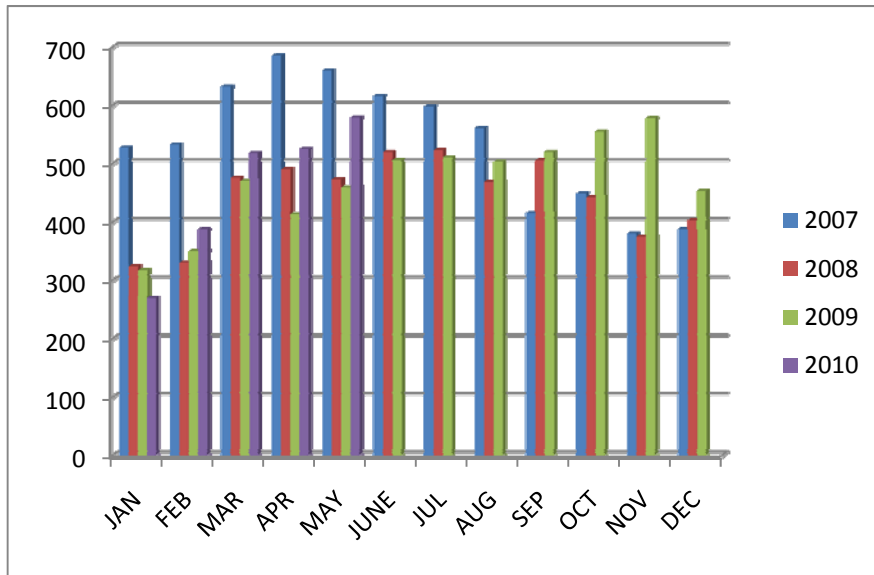


**SOLD TOTALS FOR GREATER EL PASO ASSOCIATION OF REALTORS®**



	JAN	FEB	MAR	APR	MAY	JUNE	JUL	AUG	SEP	OCT	NOV	DEC	Tot.
2007	527	533	632	685	660	616	598	561	415	449	380	388	6444
2008	324	330	476	490	473	520	523	469	506	442	375	403	5331
2009	317	350	470	413	459	506	511	503	520	555	578	453	5635
2010	270	387	518	525	579								2279

MAY Home Sold Report - Compiled on JUNE 22, 2010								
Residential	May-10	Change from 04/10	May-09	Change from 05/09 -05/010	YTD 2010	YTD 2009	10-09 YTD	
New Listings	881	-17.35%	991	-11.01%	5,101	4,933	3.41%	
Sold Listings	579	-6.31%	458	26.42%	2,324	2,009	15.68%	
Sold Volume \$	\$86,201,348	-6.19%	\$67,287,699	28.11%	\$344,658,657	\$304,694,566	13.12%	
Ave. Sale \$	\$148,880	0.13%	\$146,916	1.34%	\$148,304	\$151,665	-2.22%	
High Sale \$	\$990,000	63.64%	\$680,000	45.59%	\$1,100,000	\$1,250,000	-12.00%	
DOM	88	-15.32%	119	-26.40%	100	115	-13.28%	
BREAKDOWN OF LISTINGS								
New Homes	202	Ave List \$ 152,828	Ave/Med Sell\$ 151,700/142,475	List/Sell Ratio 99%	DOM 103			
Resale Homes	356	Ave List \$ 154,992	Ave/Med Sell\$ 149,669/123,750	List/Sell Ratio 97%	DOM 79			
Attached Property	21	Ave Sell \$ 108,371		DOM 78				
Man. & Lot	8							
Resale Pending	183	Avg. List \$ 159,425						DOM 75

Foreclosure Information for MAY 2010 as reported by RealtyTrac									
Name	Homes	1 in every Home	% of Homes	NOD	LIS	NTS	NFS	REO	Total
El Paso	257,073	5,978.4	0.12%	0	0	11	0	32	43
Texas	9,598,579	861.8	0.02%	15	0	6,274	0	4,848	11,137